

doi: 10.4081/reumatismo.2025.1935

SUPPLEMENTARY MATERIAL

From anatomy to therapy: the historical journey to cortisone

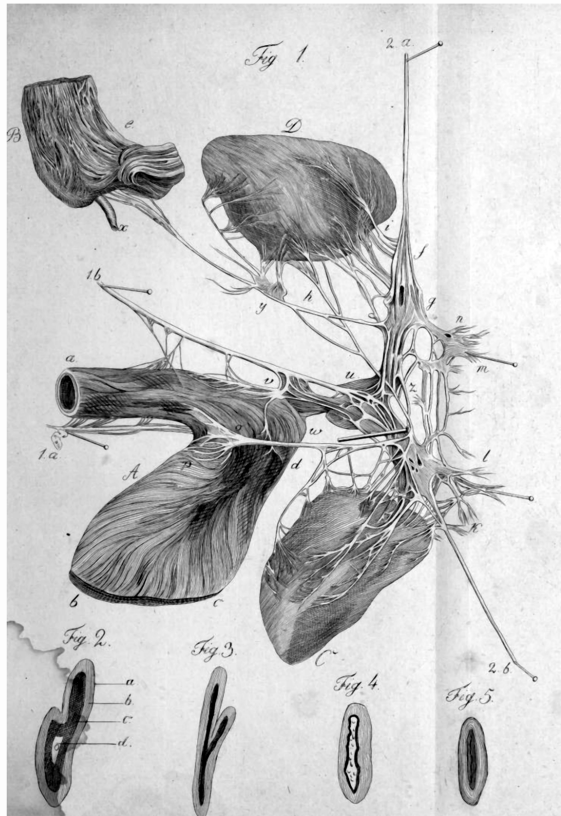
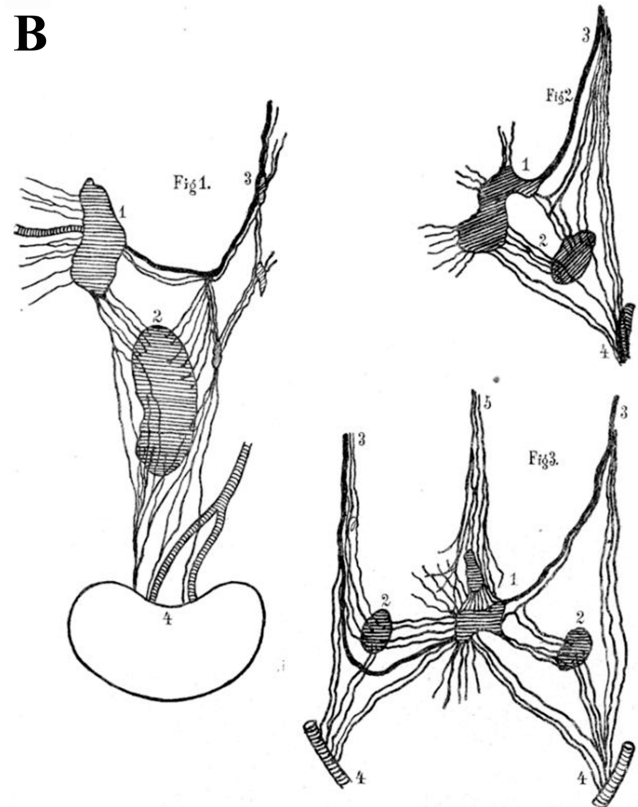
Ernesto Damiani,¹ Piero Marson,² Francesco M. Galassi³

¹Department of Biomedical Sciences, School of Medicine, University of Padua, Italy; ²Institute of History of Rheumatology, Venice, Italy; ³Department of Anthropology, Faculty of Biology and Environmental Protection, University of Lodz, Poland

Correspondence: Piero Marson, Institute of History of Rheumatology, Venice, Italy.

E-mail: pie.mars.58@gmail.com

Key words: adrenal gland research, history of medicine, rheumatology, cortisone.

A**B**

Supplementary Figure 1. Anatomy of adrenal gland innervation. A) From Carl Bergmann's *Dissertatio Inauguralis anatomica et physiologica de glandulis suprarenalibus* (1839). Shows celiac plexus in an 8-year-old girl, including adrenal glands (C, D), vagus nerves (1.a, 1.b), splanchnic nerves (2.a, 2.b), and related structures. B) From Carl Jacoby's *Beitrag zur physiologie und pharmacologie Kenntniss der Darmbewegungen* (1891). Depicts adrenal glands (2) and nerve connections in dogs (Fig. 1) and rabbits (Figs. 2 & 3), showing ganglion coeliacum (1), splanchnic nerve (3), kidney/renal artery (4), and vagus fibers (5).

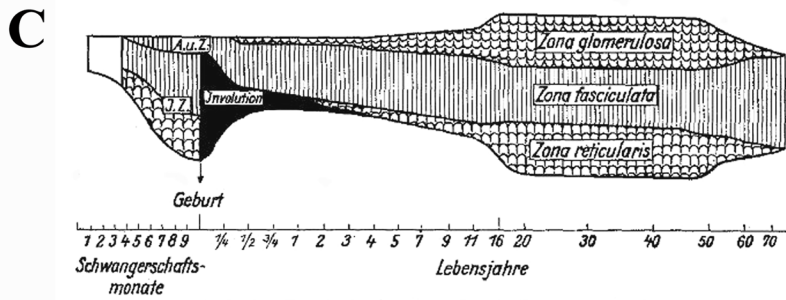
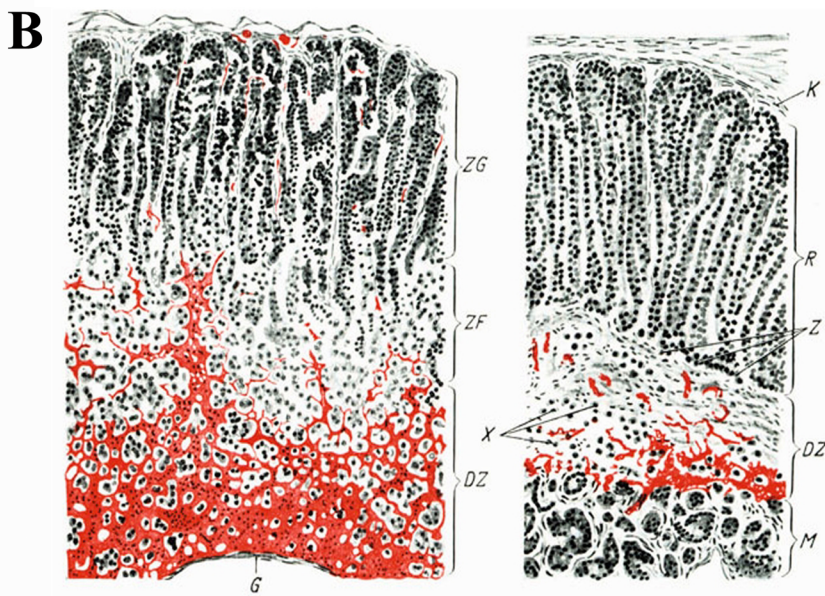
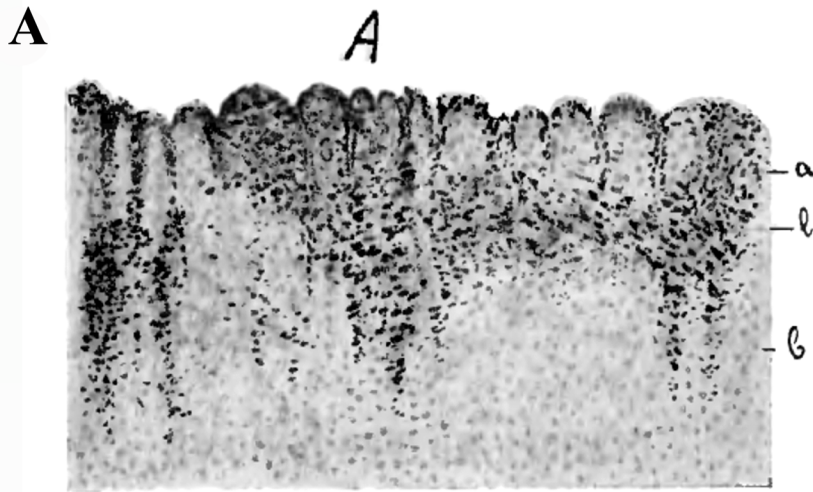


Abb. 8. Die Lebenskurve der Nebennierenrinde.

Supplementary Figure 2. Fetal and postnatal development of the adrenal gland. A) Starklowna and Węgrzynowski (1910b), Fig. 1A. First identification of "fetal zone" in full-term fetus adrenal. a) developed cortical cells b) undeveloped cortical cells l) lipoids; B) Peter (1938). Left: Fig. 473, 2-day-old boy's adrenal (ZF = zona fasciculata, ZG = zona glomerulosa). Right: Fig. 474, 1-month-old boy's adrenal (M = medulla, DZ = degeneration zone, Z = innermost cells, K = capsule); C) Rotter (1949), Fig. 8. Life curve of adrenal cortex from embryonal to adult 1

Supplementary Table 1. Putative early references to the adrenal glands in ancient sources.

Source	Passage	Text
Griffith M., <i>Aelfric's Use of his sources in the preface to Genesis, together with a conspectus of biblical and patristic Sources and Analogues.</i> (7)	LEVITICUS III: 3-4	And they shall offer a sacrifice to the Lord: the fat and the whole rump, with the kidneys, and the fat that covereth the belly and all the vitals and both the little kidneys, with the fat that is about the flanks, and the caul of the liver with the little kidneys.
Cook F. C. (Ed.) <i>The Holy Bible according to the authorized version (A.D. 1611), with an explanation and critical commentary and a revision of the translation, by bishops and clergy of the Anglican Church, vol. 1, part 1, GENESIS-EXODUS.</i> (8)	EXODUS XXIX: 13, 22	And thou shalt take all the fat that covereth the inwards, and the caul that is above the liver, and the two kidneys, and the fat that is upon them.
	LEVITICUS III: 3-4, 10, 15 LEVITICUS IV: 9 LEVITICUS VII: 4	And the two kidneys, and the fat that is on them, which is by the flanks, and the caul above the liver, with the kidneys, it shall he take away.
	LEVITICUS VIII: 16, 25	And he took all the fat that was upon the inwards, and the caul above the liver, and the two kidneys, and their fat, and Moses burned it upon the altar.
	DEUTERONOMY XXXII: 14	With the fat of kidneys
Homer, <i>Iliad</i> , https://www.perseus.tufts.edu	Book 21, lines 200-204	He spake, and drew forth from the bank his spear of bronze, and left Asteropaeus where he was, when he had robbed him of his life, lying in the sands; and the dark water wetted him. With him then the eels and fishes dealt, plucking and tearing the fat about his kidneys.
Max Simon, <i>Anatomie des Galen, II Band.</i> (13)	<i>XIII. Buch. - Herausnahme der Därme. Venen des Bauchfelles</i> , p. 134.	Was die klar sichtbaren Venen angeht, welche Du von der abwärts steigenden Hohlvene kommen siehst, so sind es diese, welche ich Dir beschreiben will. Die erste ist eine Vene, welche zur linken Seite kommt, etwas oberhalb der auf dieser Seite befindlichen Niere (<i>V. suprarenalis</i>). Ein Zweig der nicht kleinen Vene setzt sich an ein hier liegendes lockeres Fleisch* (<i>Drüse, sc. Nebenniere</i>) an und wächst darin ein. Die zweite geht zu dieser Niere selbst (<i>V. renalis</i>).
Lyons M.C., Towers B. <i>Galen on anatomical procedures – the later books. A translation by the Late W.L.H. Duckworth.</i> (14)	<i>Book XIII – On the veins and arteries</i> , p. 148.	As for the clearly visible veins which you see coming from the down-going vena cava, these are what I am about to describe to you. The first is a vein [<i>? left phrenic</i>] which comes to the left side, somewhat above the kidney that is found on this side. located on that side (the suprarenal vein). A twig of this not inconsiderable vein joins and connects with the spongy flesh (<i>suprarenal gland</i>) lying there. The second vein (renal) goes to the kidney itself.
*: Simon, 1906, note 10, p. 243: “Schlaffes, lockeres Fleisch” ist technisch für „Drüse“ bei Hunain (“Flabby, loose flesh” is technical lexicon for “gland” in Hunain). Hunain ibn Ishāq (808-873) was the Arab scholar translator of Galen.		